



EXTERNAL WALL INSULATION

**SOLTHERM**  
SYSTEMS BY BOLIX



# WARMTH AND COMFORT ALL YEAR THROUGH

WE ARE FLEXIBLE

WE ARE EXPERIENCED

WE ARE EXPERTS

WE DESERVE YOUR BUSINESS

EXTERNAL WALL INSULATION



## WHO WE ARE



## UNIQUE SYSTEMS DESIGNED FOR UK WEATHER

- ⊗ 25 years of experience in EWI systems in Europe.
- ⊗ Presence in 15 European countries
- ⊗ 100 mln sq m of EWI
- ⊗ NSAI, BBA, ETA, DiBT approvals
- ⊗ ISO supervision by TUV Nord
- ⊗ Own research and development (R&D)
- ⊗ Kinnell Eco insurance
- ⊗ Technical support, logistics, system training

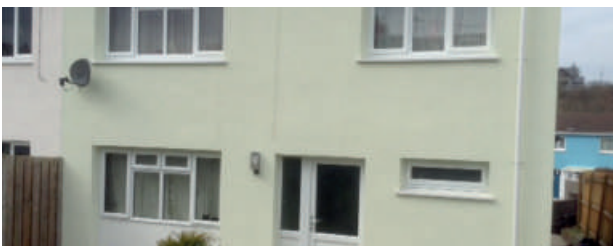
## PROJECTS DONE IN UK



FOXTON, CAMBRIDGESHIRE



GIBBONSDOWN



LLANARTH



LLANDYSUL



## WHAT WE OFFER

### 4SEASONS SYSTEM

**NO1 SOLUTION** TO INSTALLING EWI ALL YEAR THROUGH



#### EXTREMELY FAST CURING PROCESS

Advanced silicone render cures during cold and wet condition



#### ANTI-FUNGAL PROTECTION

Prevention of algal and fungal growth



#### LONG LIFE SYSTEM

High resistance against aging

- SPECIALLY TAILORED FOR DEMANDS OF BRITISH WEATHER
- SUITABLE FOR AN UNLIMITED RANGE OF BUILDINGS AND FAÇADES
- SUITABLE FOR EPS AND MINERAL WOOL
- LONG TIME MAINTENANCE FREE

### HD ULTIMATE

**INDESTRUCTIBLE SYSTEM** WITH EXTREME FLEXIBILITY



#### IMPACT RESISTANCE

Impact resistant walls, including acts of vandalism



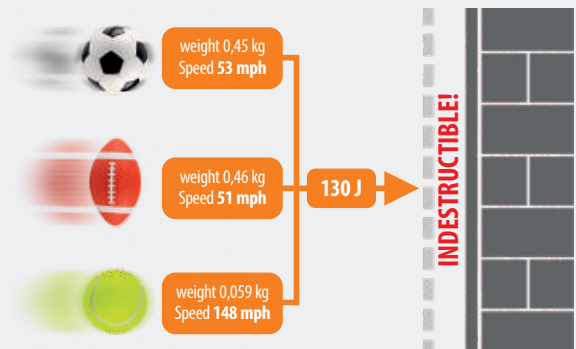
#### EXTREME FLEXIBILITY

Excellent protection from cracking



#### LOW WATER ABSORPTION

No damage inside the wall caused by water absorption and accumulation



- MECHANICAL IMPACT RESISTANCE IS **13 TIMES HIGHER** THAN THE ETAG 004 REQUIREMENTS.

- IDEAL FOR SCHOOLS, STORES, PUBLIC BUILDINGS AND SOCIAL HOUSING WHERE EXTREME LEVEL OF PERFORMANCE IS REQUIRED.

## EXTERNAL WALL INSULATION



### HD WEATHER

PERFECT SOLUTION FOR DAMP WEATHER



#### WASH-OFF RESISTANCE

Perfectly selected products which cure in high humidity conditions



#### LOTUS EFFECT

Self-cleaning effect by rainfall



#### UV BLOCKING

Lasting and vivid colours, which do not fade  
Only inorganic pigments are used

- RECOMMENDED FOR SINGLE-FAMILY HOUSE (NEW AND EXISTING)
- EASY REPAIR AND MAINTENANCE

#### WASH OFF RESISTANCE TEST OF SOLTHERM HD WEATHER



50% RH, 23°C - LABORATORY, good summer conditions

**NO WASH OFF just after 2h!**

90% RH, 10°C - TESTING CHAMBER

**NO WASH OFF just after 2h!**

100% RH, 10°C - CONTAINER WITH WATER PLACED  
IN TESTING CHAMBER, typical winter conditions

**NO WASH OFF just after 24h!**

### PREMIUM ACRYLIC SYSTEM

PROVEN & ECONOMICAL WALL INSULATION



#### THE BEST VALUE FOR MONEY

Proven system which has stood the test of time



#### CAN BE PRESSURE WASHED

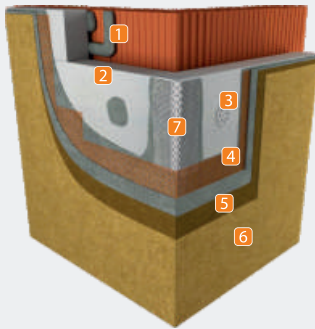
Building exterior has never been so easy to keep clean

- FOR ANY TYPE OF BUILDINGS VULNERABLE TO DIRT AND HARSH CONDITIONS
- LONG TIME MAINTENANCE FREE



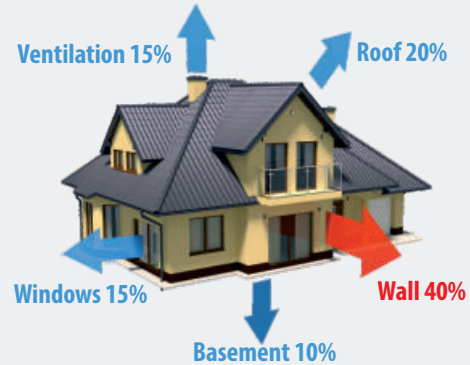
## WHAT EWI IS

### COMPONENTS OF EWI



- 1 adhesive - to attach insulation panels to wall
- 2 insulation material - mineral wool slabs or EPS boards
- 3 mechanical fixing - to fasten insulation to walls
- 4 fibreglass mesh reinforced base coat - sound and firm render undercoat – 4mm
- 5 key coat - seals off and reduces surface porosity, improves render adhesion to base coat
- 6 render coat - provides decorative finish to the insulation system
- 7 ancillary materials for finishing special façade areas

### HEAT LOSS IN A STANDARD SINGLE-FAMILY HOUSE



**MAJORITY OF HEAT LOSS IS THROUGH EXTERIOR WALLS!**

## WHY EWI

HEATING COSTS REDUCED (EVEN BY UP TO 30%)

HIGHER VALUE OF THE HOUSE IN THE REAL ESTATE MARKET

INCREASE THE VALUE OF THE PROPERTY



INCREASED LEVEL OF HEATING COMFORT, IMPROVED MICROCLIMATE

ENVIRONMENTAL PROTECTION BY REDUCING CO<sub>2</sub> EMISSION

## WHAT MAKES SOLTHERM SYSTEMS UNIQUE

### FAST INSTALLATION

- ⊗ can be install in temperatures around 0°C
- ⊗ early grip of adhesive
- ⊗ strong adhesion
- ⊗ number of fixings can be reduced
- ⊗ full set of compatible ancillary materials
- ⊗ systems are compatible
- ⊗ can be applied to one surface
- ⊗ not hazardous to the environment

### LOW OPERATION COSTS

- ⊗ impact resistance up to 130J
- ⊗ highest algae resistance
- ⊗ lotus effect
- ⊗ can be pressure washed

### DURABILITY

- ⊗ durable fixings to resist strong winds and wind uplift forces on the elevation

EXTERNAL WALL INSULATION

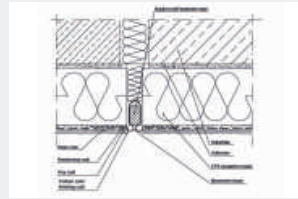


## WHAT WE CAN DO FOR YOU



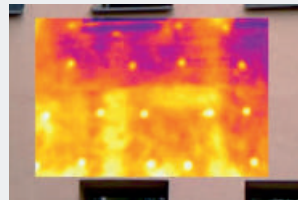
**ON SITE INSPECTIONS & PROFESSIONAL ADVICE**

**SITE SPECIFICATION DRAWING DETAILS ANALYSIS**



**COMPREHENSIVE TRAININGS FOR OPERATIVES AND SUPERVISORS**

**U VALUE CALCULATIONS & THERMOGRAPHIC SURVEYS**



**DESIGN SERVICE**

 Milton Keynes  
Challenge House  
Sherwood Drive  
MK3 6DP

 01908 533 444

 [office@soltherm.co.uk](mailto:office@soltherm.co.uk)

**WE ARE FLEXIBLE**

**WE ARE EXPERIENCED**

**WE ARE EXPERTS**

**WE DESERVE YOUR BUSINESS**



[www.ewi-soltherm.com](http://www.ewi-soltherm.com)